

INSTALLATION

# CSM Link Software v3.2

---



Danmeter A/S  
Kildemosevej 13 • DK-5000 Odense C  
Tel.: +45 63 11 29 30 • Fax: +45 63 11 29 31 • e-mail: [info@danmeter.dk](mailto:info@danmeter.dk)



# Content

<b>1</b>	<b>Get Ready</b> .....	<b>1</b>
	1.1 Software Requirements.....	1
	1.2 Hardware Requirements.....	1
<b>2</b>	<b>Important about CSM Link with USB</b> .....	<b>2</b>
<b>3</b>	<b>Install CSM Link Software v3.2</b> .....	<b>3</b>
<b>4</b>	<b>Test the Installation</b> .....	<b>7</b>

# 1 Get Ready

Before installing and running the CSM Link Software you will need to complete the following tasks:

## 1.1 Software Requirements

- ✓ Make sure you have the privileges to install programs on the computer.
- ✓ The CSM Link Software requires Microsoft .NET Framework 2.0 or later. If not already installed on your computer this installation program will install version 2.0 of the Microsoft .NET Framework. The installation may require a restart of the computer before continuing with the installation of CSM Link Software.
- ✓ Platform and Software Requirements:
  - Microsoft Windows 2000 with the latest Windows service pack.
  - Microsoft Windows XP (Home or Professional).
- ✓ Close all running applications on the computer.
- ✓ Uninstall any earlier versions of the CSM Link Software and manually delete any remaining files/folders.

## 1.2 Hardware Requirements

- ✓ 1 available Serial or USB communication port
- ✓ Display resolution of minimum 1024\*768 pixels
- ✓ 512Mb Memory (recommended)
- ✓ Processor 1GHz or higher (recommended)
- ✓ 10Mb free RAM/hour recorded data

## **2 Important about CSM Link with USB**

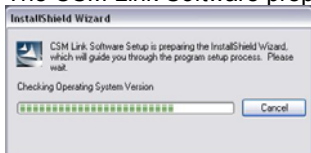
This section contains important information regarding the CSM Link with USB connector.

**Do NOT connect the CSM Link to the computer before the CSM Link Software is installed**

### 3 Install CSM Link Software v3.2

Insert the CSM Link Software CD into your computer CD-ROM drive. The CSM Link Software installation program automatically launches. If the installation is not automatically launched, open the Explorer and run the setup.exe from the CD-ROM drive.

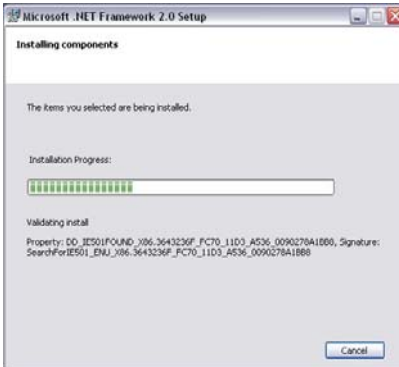
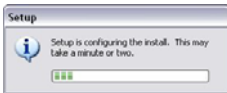
- The CSM Link Software prepares to install.



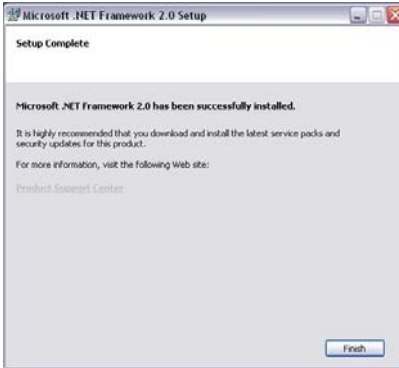
- Before installing CSM Link Software, the installation program checks if the required Microsoft .NET Framework is installed on the computer.
- If the required Microsoft .NET Framework is not installed the installation of CSM Link Software is paused and the Microsoft .NET Framework is installed. Click the “Next” button.



- Accept the License Agreement for the Microsoft .NET Framework and click the “Install” button. After accepting the License Agreement the Microsoft .NET Framework will be installed. This may take some time depending on the speed of your computer.



- The Microsoft .NET Framework is now installed. Click the “Finish” button to continue with the CSM Link Software installation.



- After preparing the setup of the CSM Link Software the welcome screen will appear, click the “Next” button to continue installation of CSM Link Software.





- Click the “Install” button to install CSM Link Software



- Status of the CSM Link Software installation is now shown.

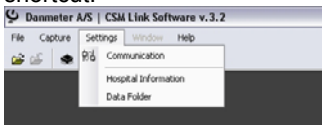


- Installation of the CSM Link Software has been completed. Click the “Finish” button to finish the installation.

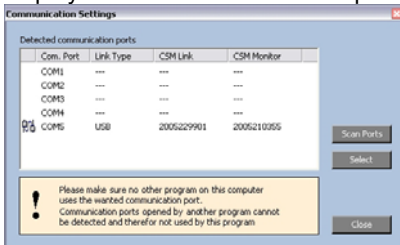


## 4 Test the Installation

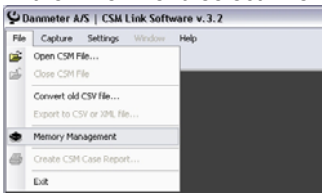
- Ensure the CSM Link is connected to the computer and a CSM Monitor is started and linked with the CSM Link.
- Start the CSM Link Software
- In the “Settings” menu select “Communication” or use the “I Want To...” shortcut.



- Now the program will make a scan of the computer and detect all free communication ports and communication ports with a CSM Link connected.
- The communication port where the CSM Link has been connected will be shown as a new com-port with Link Type set to USB (if the CSM Link has a USB connector). The serial number of the CSM Link and CSM Monitor connected will be displayed. Select the communication port to use by clicking in the list and click the “Select” button. An icon will be displayed on the communication port selected. Close the window.



- In the “File” menu select “Memory Management”



- The “Memory Management” dialog will be displayed. See the manual for detailed information on the CSM Link Software.

